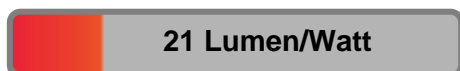


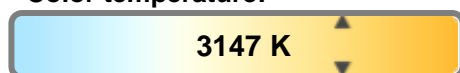
#### Light efficiency:



#### Light quality:



#### Color temperature:

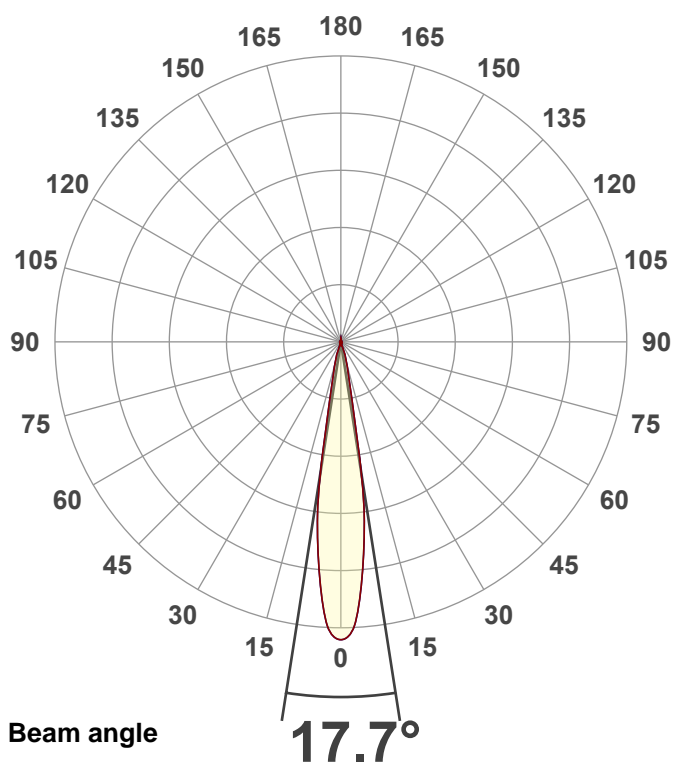


**Output:** 15626 lm  
**Peak:** 109535 cd  
**Power:** 734 W  
**PF:** 1.0



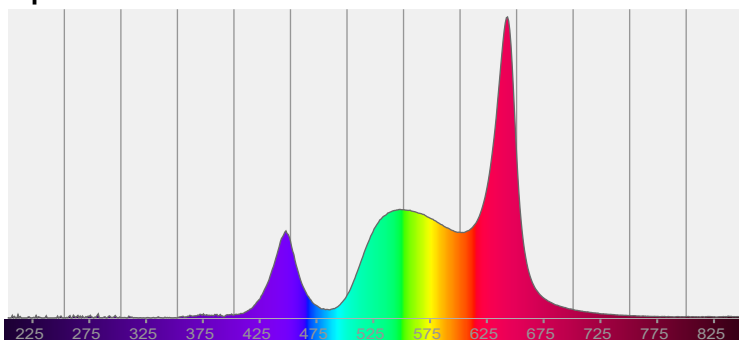
**Product name:**  
**Hydro Flex L19 (Zoom 50% 3200K)**  
**Item number:**

**Date and time:**  
**9/6/2025 12:35:31 PM**

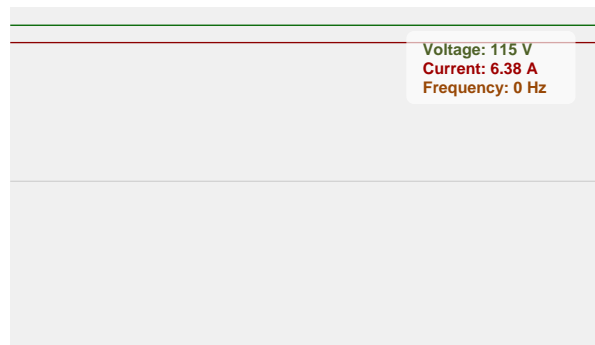


CIE 1931  
x: 0.427  
y: 0.399

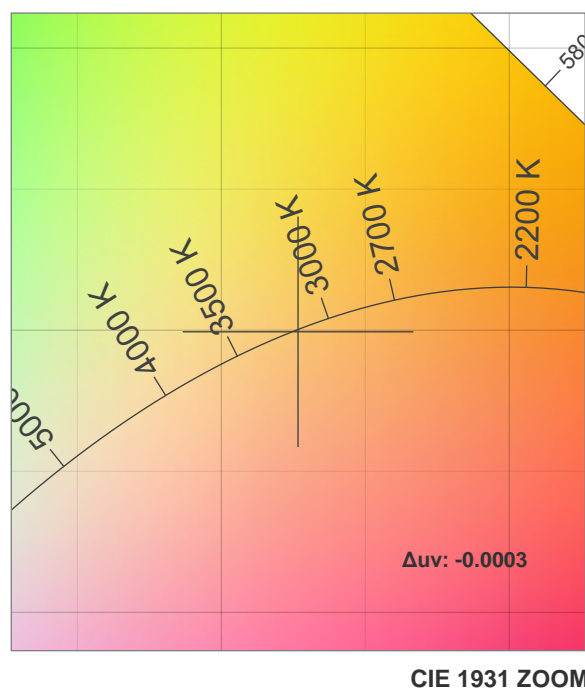
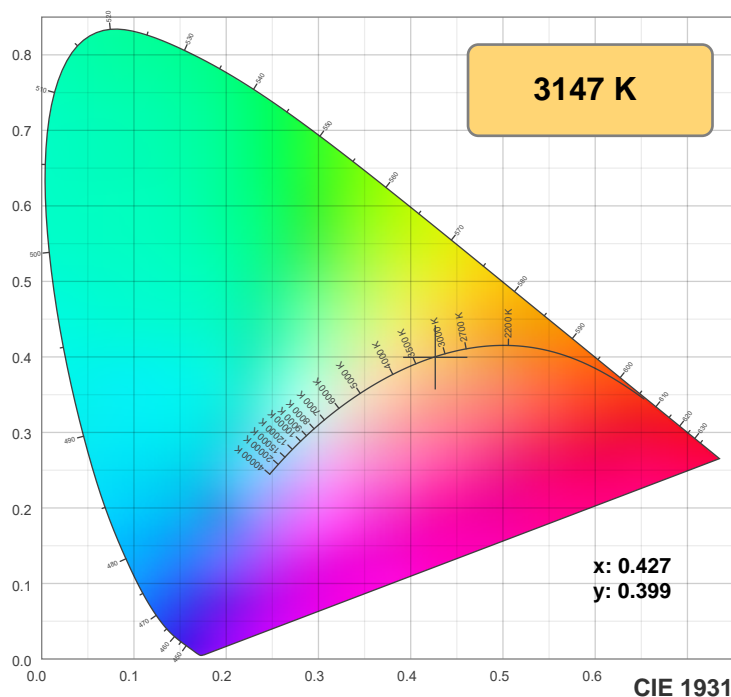
#### Spectra



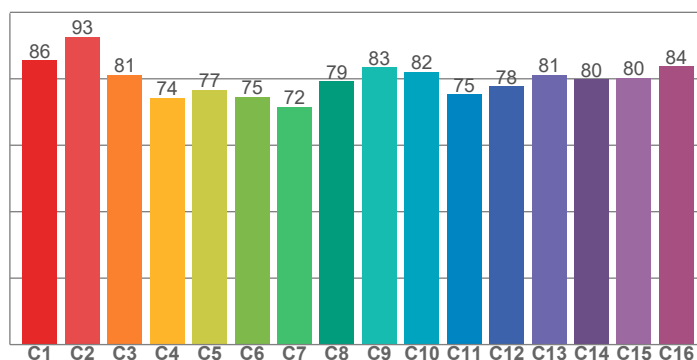
#### Power



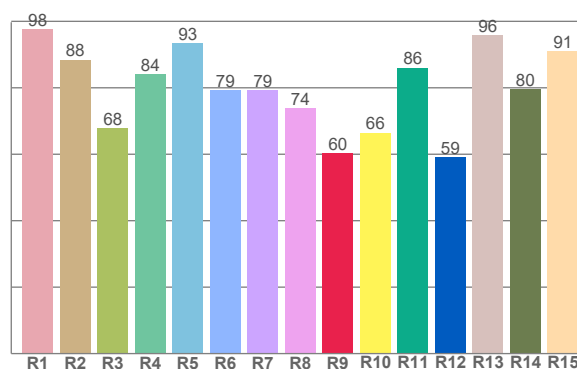
## Color details



**TM-30: 80.4**



**CRI: 83.0 (R1-R8)**



CRI R values, only R1-R8 are used to calculate final CRI value

R1	R2	R3	R4	R5	R6	R7	R8	R9	R10	R11	R12	R13	R14	R15
97.6	88.5	67.8	84.0	93.3	79.4	79.3	73.8	60.4	66.5	86.1	59.0	95.8	79.7	90.9

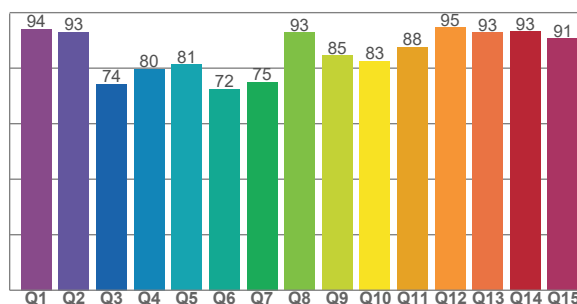
TM30 C values, 16 binned values out of total of 99 C values

C1	C2	C3	C4	C5	C6	C7	C8	C9	C10	C11	C12	C13	C14	C15	C16
85.5	92.7	81.3	74.3	76.7	74.5	71.6	79.2	83.4	82.2	75.3	77.7	81.2	79.9	80.4	83.7

CQS Q values

Q1	Q2	Q3	Q4	Q5	Q6	Q7	Q8	Q9	Q10	Q11	Q12	Q13	Q14	Q15
94.0	93.1	74.3	79.7	81.2	72.5	75.1	92.9	84.6	82.6	87.7	94.7	92.8	93.3	90.7

**CQS: 83.8**



### Color parameters

Color temperature	Color rendering index	Red component	Color fidelity	Color gamut	Color quality scale	Color coordinate cie 1931	Color coordinate cie 1931	Color coordinate	Color coordinate	Color deviation from black body
CCT	CRI	CRI R9	TM30 Rf	TM30 Rg	CQS	x	y	u	v	Δuv
3147 K	83.0	60.4	80.4	111.2	83.8	0.427	0.399	0.246	0.345	-0.0003

# TM-30 details

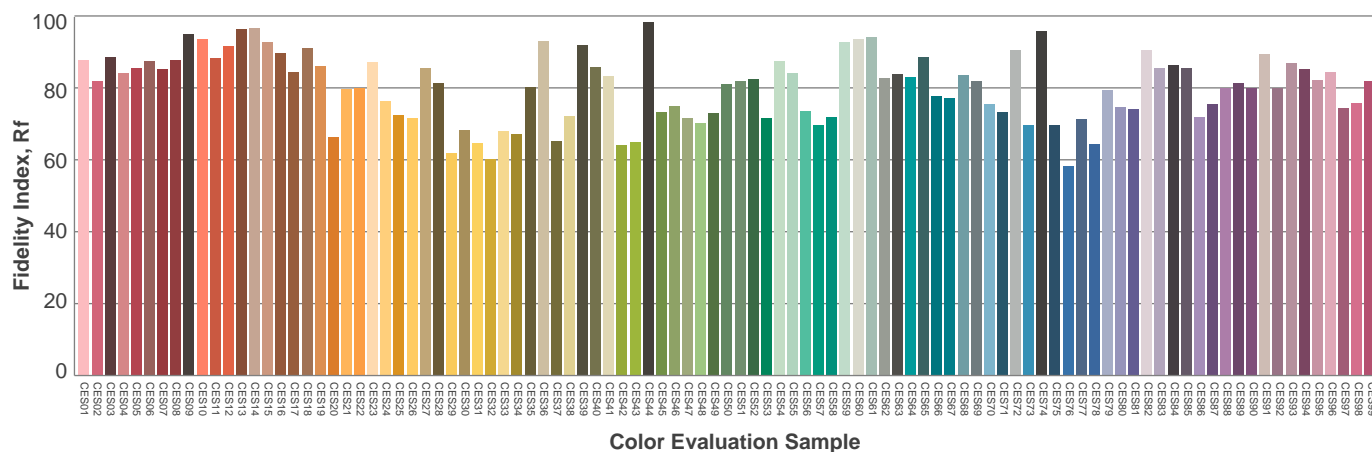
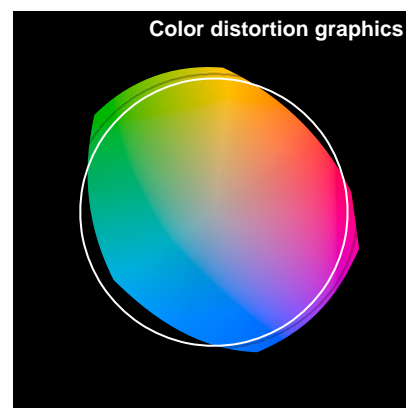
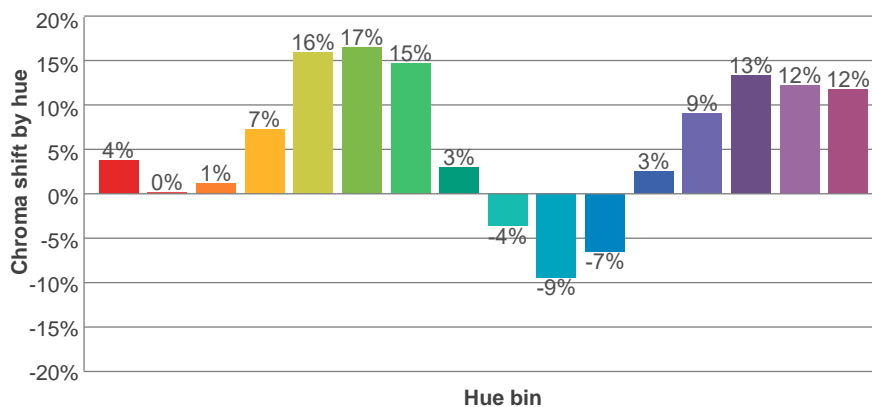
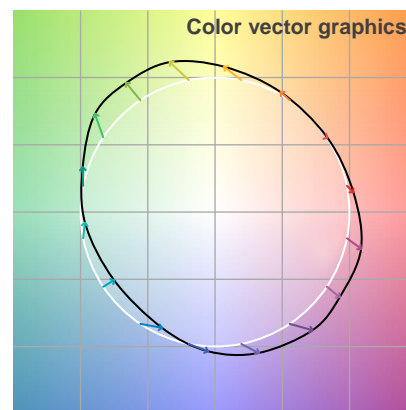
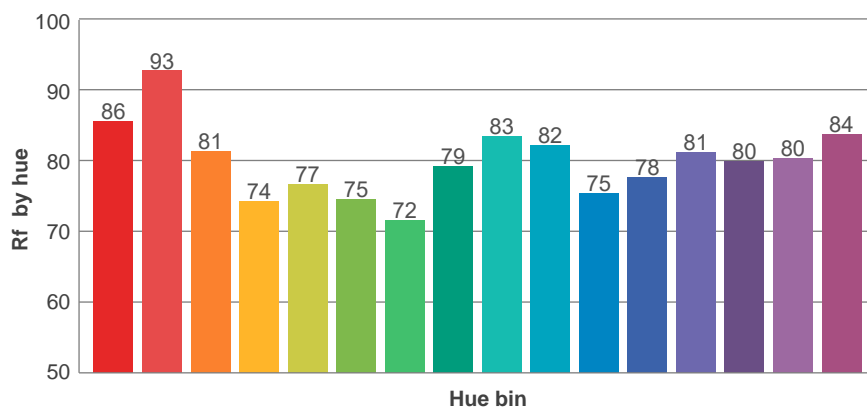
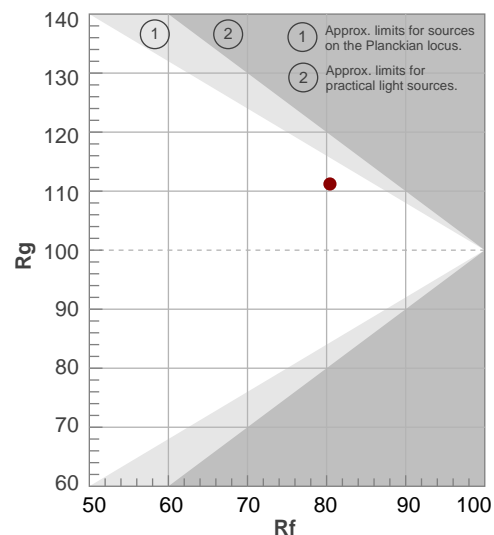
**Rf 80.4**

Fidelity index Rf

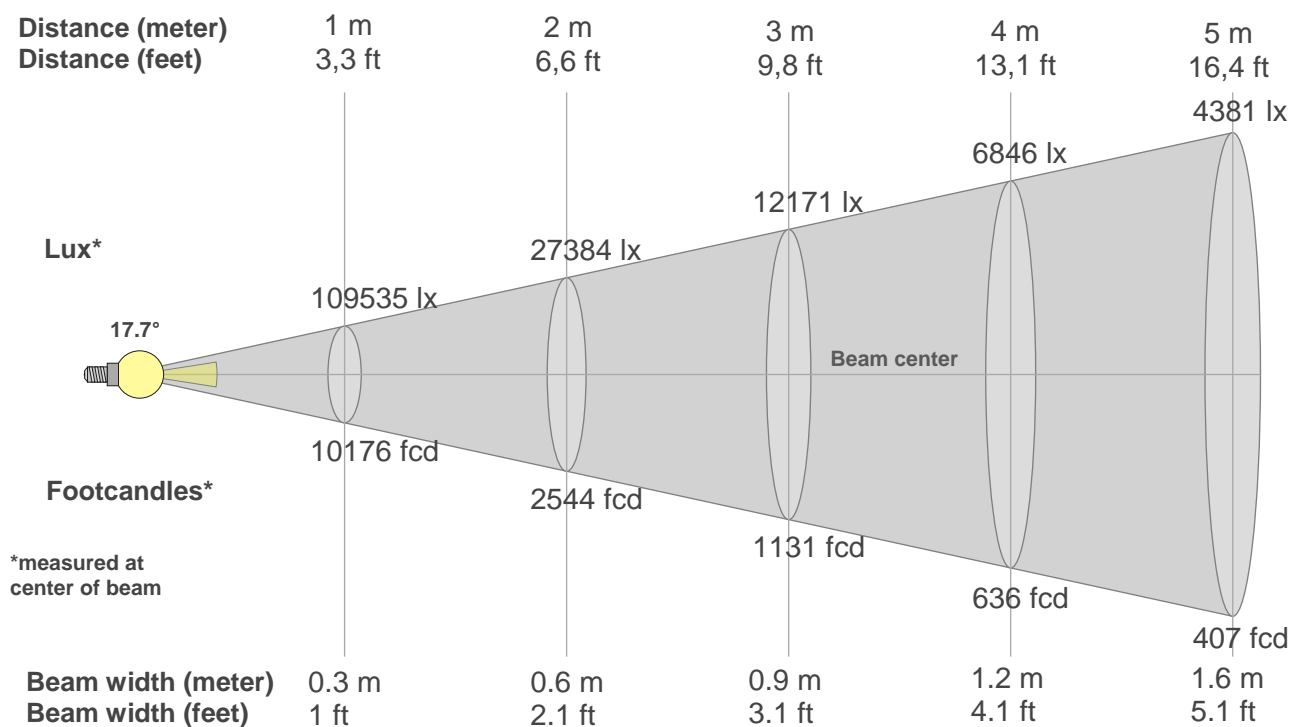
**Rg 111.2**

Gamut index Rg

Hue Bin	R <sub>f</sub>	Shifts (%)	
		Chroma	Hue
1	86	4%	-6%
2	93	0%	0%
3	81	1%	9%
4	74	7%	14%
5	77	16%	11%
6	75	17%	2%
7	72	15%	-11%
8	79	3%	-13%
9	83	-4%	-11%
10	82	-9%	0%
11	75	-7%	15%
12	78	3%	15%
13	81	9%	11%
14	80	13%	11%
15	80	12%	-1%
16	84	12%	-6%



## Beam details



### Beam intensities from 1-20m

1m	2m	3m	4m	5m	6m	7m	8m	9m	10m	11m	12m	13m	14m	15m	16m	17m	18m	19m	20m
3.3ft	6.6ft	9.8ft	13.1ft	16.4ft	19.7ft	23ft	26.2ft	29.5ft	32.8ft	36.1ft	39.4ft	42.7ft	45.9ft	49.2ft	52.5ft	55.8ft	59.1ft	62.3ft	65.6ft
109535lx	27384lx	12171lx	6846lx	4381lx	3043lx	2235lx	1711lx	1352lx	1095lx	905lx	761lx	648lx	559lx	487lx	428lx	379lx	338lx	303lx	274lx
10176.2 fcd	2544 fcd	1130.7 fcd	636 fcd	407 fcd	282.7 fcd	207.7 fcd	159 fcd	125.6 fcd	101.8 fcd	84.1 fcd	70.7 fcd	60.2 fcd	51.9 fcd	45.2 fcd	39.8 fcd	35.2 fcd	31.4 fcd	28.2 fcd	25.4 fcd

### Intensities in 0° c-plane

0°	1°	2°	3°	4°	5°	6°	7°	8°	9°	10°	11°	12°	13°	14°	15°	16°	17°	18°	19°
110k	110k	110k	107k	99k	90k	82k	73k	64k	53k	43k	32k	21k	13k	10k	8k	5k	3k	1k	1k
100%	100%	100%	98%	90%	82%	75%	67%	58%	49%	39%	29%	19%	12%	9%	7%	5%	3%	1%	1%

### Intensities in 90° c-plane

0°	1°	2°	3°	4°	5°	6°	7°	8°	9°	10°	11°	12°	13°	14°	15°	16°	17°	18°	19°
110k	110k	110k	107k	99k	90k	82k	73k	64k	53k	43k	32k	21k	13k	10k	8k	5k	3k	1k	1k
100%	100%	100%	98%	90%	82%	75%	67%	58%	49%	39%	29%	19%	12%	9%	7%	5%	3%	1%	1%

### Intensities in 180° c-plane

0°	1°	2°	3°	4°	5°	6°	7°	8°	9°	10°	11°	12°	13°	14°	15°	16°	17°	18°	19°
110k	110k	110k	107k	99k	90k	82k	73k	64k	53k	43k	32k	21k	13k	10k	8k	5k	3k	1k	1k
100%	100%	100%	98%	90%	82%	75%	67%	58%	49%	39%	29%	19%	12%	9%	7%	5%	3%	1%	1%

### Intensities in 270° c-plane

0°	1°	2°	3°	4°	5°	6°	7°	8°	9°	10°	11°	12°	13°	14°	15°	16°	17°	18°	19°
110k	110k	110k	107k	99k	90k	82k	73k	64k	53k	43k	32k	21k	13k	10k	8k	5k	3k	1k	1k
100%	100%	100%	98%	90%	82%	75%	67%	58%	49%	39%	29%	19%	12%	9%	7%	5%	3%	1%	1%

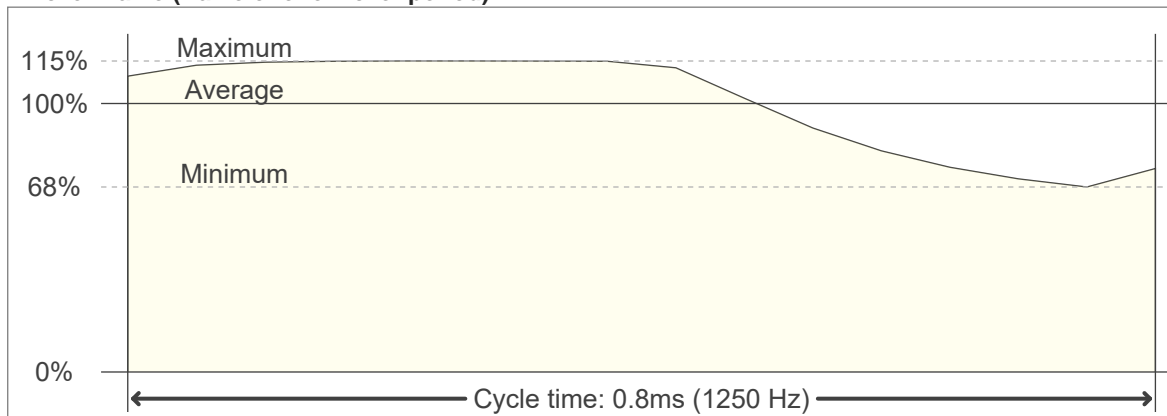
Beam angle 50%	Field angle 10%	Cutoff angle 2,5%	Intensity ratio in 120° cone	Intensity ratio in 90° cone
17.7°	27.5°	34°	71.2%	66.7%

# Flicker

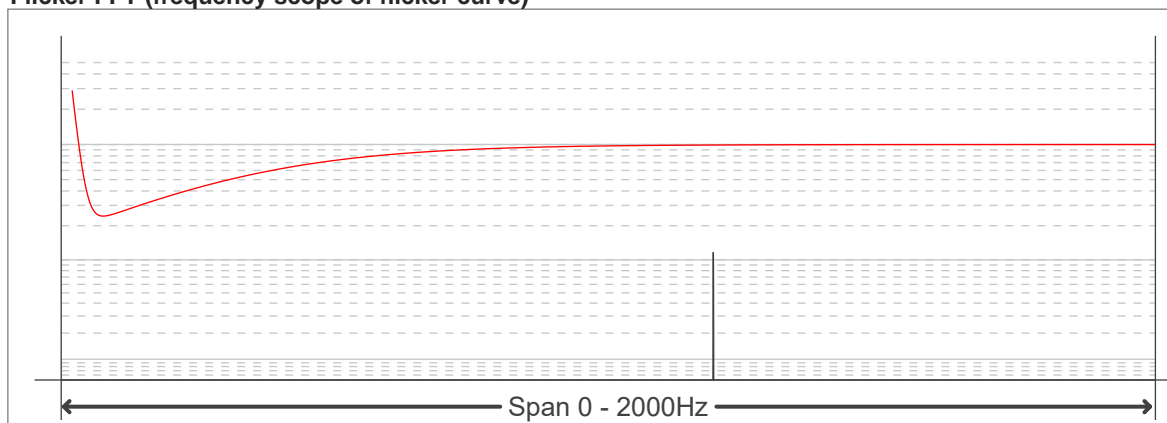
**Flicker curve (complete sampled flicker signal)**



**Flicker frame (frame of one flicker period)**



**Flicker FFT (frequency scope of flicker curve)**



**Flicker results:**

Flicker frequency:		1250 Hz	
Flicker index:	0.08	JA8/10 40Hz	0.1 %
Flicker percentage:	26.08 %	JA8/10 90Hz	0.16 %
SVM: (Visual flicker)	0.24	JA8/10 200Hz	0.32 %
PstLM	0	JA8/10 400Hz	0.69 %
Mp	0.05	JA8/10 1000Hz	3.07 %

**Flicker conditions:**

Sample rate:	20000 samples/second
--------------	----------------------